

MONTHLY MEMBERSHIP PROGRESS REPORT

LOCATION SOUTH CAROLINA

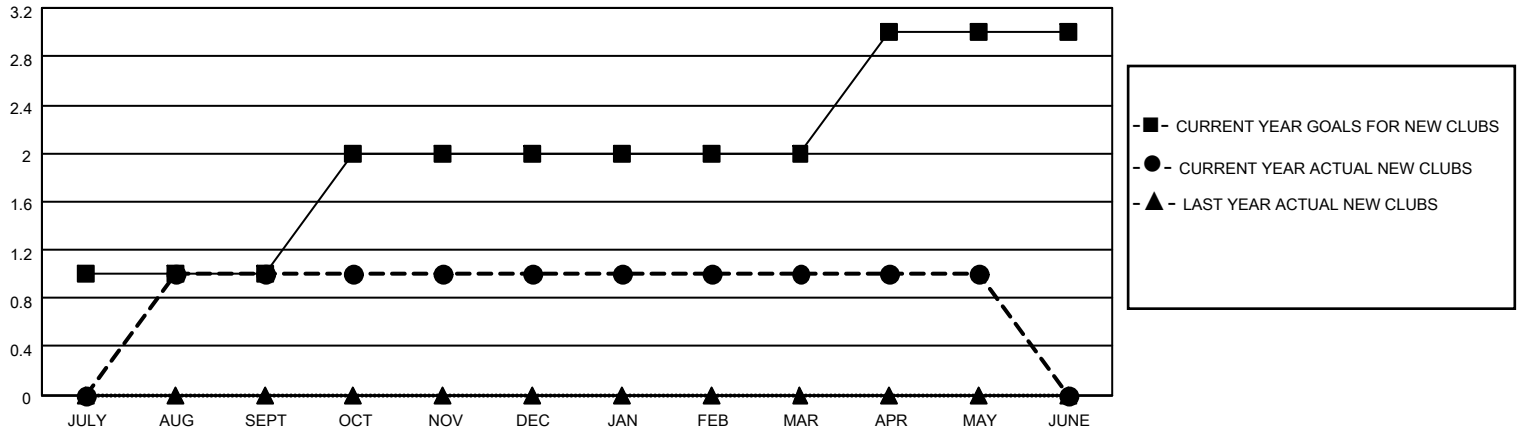
District 32 S

Results as of: 5/31/2021

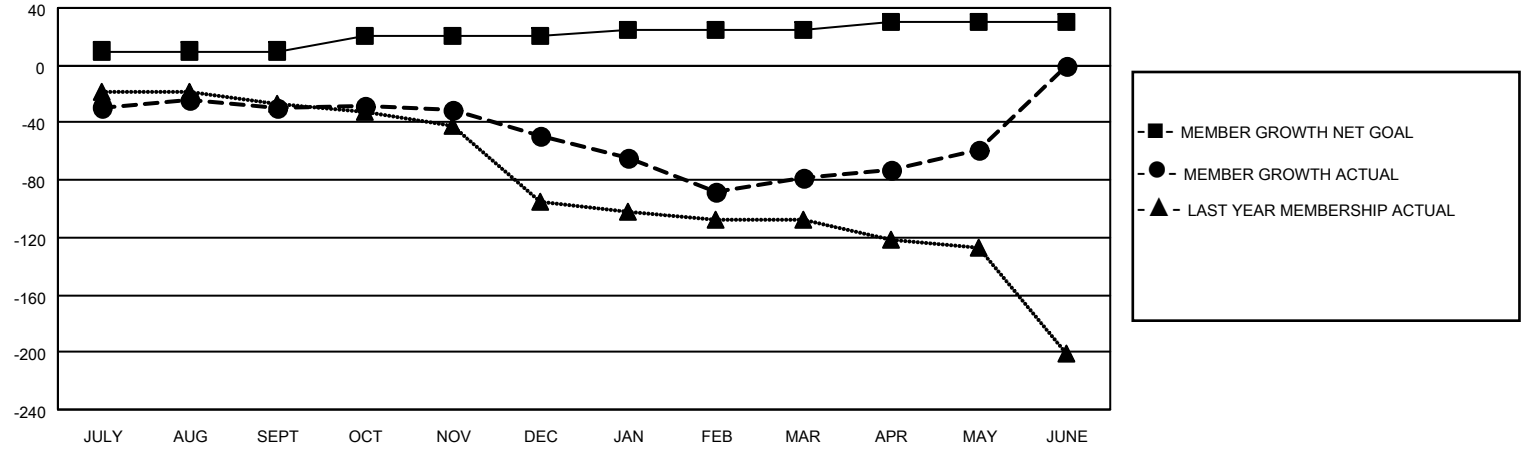
Clubs			
RESULTS FOR 2020-2021			
QUARTER	NEW CLUB GOAL	NEW CLUBS	DROPPED CLUBS
JULY/AUG/SEPT	1	1	1
OCT/NOV/DEC	1	0	1
JAN/FEB/MAR	0	0	2
APR/MAY/JUNE	1	0	0

Members			
RESULTS FOR 2020-2021			
QUARTER	MEMBER GROWTH NET GOAL	MEMBER GROWTH ACTUAL	DROPPED MEMBERS ACTUAL (including transfers)
JULY/AUG/SEPT	10	60	82
OCT/NOV/DEC	10	43	61
JAN/FEB/MAR	5	33	54
APR/MAY/JUNE	5	40	17

GOALS AND ACTUAL NEW CLUBS CUMULATIVE



GOALS AND ACTUAL MEMBERS CUMULATIVE



DROPPED CLUBS: 4	30 CLUBS OF 68 ADDED 1 OR MORE NEW MEMBERS	<u>GENDER DISTRIBUTION</u>
<u>DROPPED MEMBERS</u>	CLICK HERE FOR CUMULATIVE MEMBERSHIP DATA	MALE 1,072 (64.11%)
DECEASED 30		FEMALE 600 (35.89%)
CLUB CANCELLED 6		TOTAL FAMILY UNIT MEMBERS 385
OTHER 178		FAMILY MEMBERS PAYING HALF DUES 195
TOTAL 214		